



HISTORY

Polimex-Cekop holds a majority stake in Mostostal Siedlce SA

Change of company name into Polimex-Mostostal SA

Start up of new workshop facility in Siedlce including paintshop

Creating of Integrated Part of Company (IPC) which includes Steel Structures Division in Siedlce

1973

1997

1999

2004

2006

2009

2012

2015

2016

Establishment of Mostostal Siedlce

Mostostal Siedlce debut on the Warsaw Stock Exchange

Merge of Polimex-Cekop SA and Mostostal Siedlce SA – establishment of Polimex-Mostostal Siedlce SA

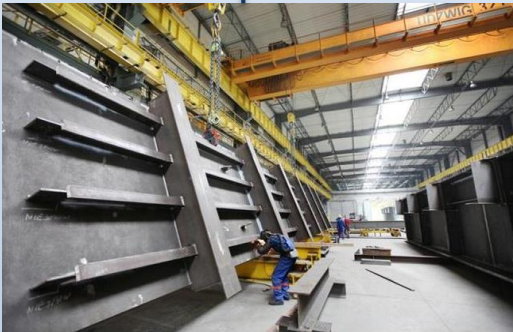
Changing of company structure from multi-division into segments organized. Creating of Production Segment, start of restructurisation

Separation of IPC from Polimex-Mostostal SA. Start of operation as Mostostal Siedlce



COMPANY PROFILE

MOSTOSTAL SIEDLCE



STEEL CONSTRUCTIONS



**CORROSION PROTECTION –
HOT DIP GALVANIZING AND
PAINTING**



PLATFORM GRATINGS

Mostostal Siedlce is one of the largest manufacturer of steel structures in Poland.

WORKSHOP IN SIEDLCE

Company profile:

- Steel structures fabrication
- Platform gratings fabrication
- Hot dip galvanizing service

Workshop area:

- Total surface - **34,5 ha**
- Production halls – **10,3 ha**

Employees – 1.679 people



Mostostal Siedlce manufactures steel products on the basis of the customer's technical documentation and documentation developed by its own design engineers. The documentation is developed in compliance with the PN, DIN, EN, EUROCODES and GOST standards and is available in Polish, Russian, German and English.

The company uses specialized designing and manufacturing software: Robot, Staad-Pro, Microstation - Structural, Rm-win, ABC Płyta, MathCad, Tekla, Bocad, Rcad and Autocad.



The maximum overall dimensions of non-divisible components we can produce are: $L = 30$ m, $B = 6.3$ m, $H = 4.2$ m and weight of 64 tons. The maximum dimensions of constructions assembled indoors as test assemblies are: $L = 80$ m, $B = 25$ m, $H = 7$ m (limited by the size of the processing bay).

The execution conforms to the following standards: EN 1090, NS 3464, BSK 99, PN-B 06200, DIN 18800-7, DIN 15018, DS 804, DIN 19704 and AWS D1.1.

WORKSHOP IN SIEDLCE

Sales in 2017	500 MLN PLN (about 120,5 MLN EUR)
Employees	1679 PEOPLE
Manufacturing floor area	345 779 M²
Fabrication capacity per month	2 000 TONS – STEEL STRUCTURES 2 500 TONS – PLATFORM GRATINGS 7 000 TONS - GALVANIZING
Share in export	About 70%
Max. bridge crane lifting capacity	64 TONS

FABRICATION CAPABILITIES



Workshop in Siedlce

- Laser cutting
- Shot- & Sandblasting
- Machining, Milling
- Tooling metallurgical profiles
- Welding of steel girders
- Hole drilling in profiles and steel sheets

MODERN MACHINERY PARK



A modern line for production for welded profiles



Milling machine



Laser Cutting Machine for plates



Two portal cutting machines for plates



Universal Edge Beveller



Automatic CNC Drilling & Thermal Cutting System for Large Plates

WORKSHOP IN SIEDLCE

- Total capacity: 2 000 tons monthly
- **25** numeric machines (including Union PCR 150)
- **150** welding stations
- Qualified personel acc. to: EN 287-1, EN 9606-1, AWS D1.1



WORKSHOP IN RUDNIK

Company profile:

- Steel structures fabrication
- Painting service

Workshop area:

- Total surface – 7,25 ha
- Production halls – 1,65 ha

Employees – 294 people



WORKSHOP IN RUDNIK

Sales in 2016	60 MLN PLN (about 14,5 MLN EUR)
Employees	294 PEOPLE
Manufacturing floor area	72 500 M²
Fabrication capacity per month	600 TONS – STEEL STRUCTURES
Share in export	About 70%
Max. bridge crane lifting capacity	64 TONS

WORKSHOP IN RUDNIK – REALIZATIONS



Drilling Tower Lotos, Poland 339 tons of steel



**Support structure of the boiler
Allborg, Malta 759 tons of steel**



**Heads for docking vessels
Plauen , 51 tons of steel**

OFFER

Mostostal Siedlce manufactures steel structures for:

- power plants
- waste to energy plants
- petrochemical industries
- metallurgy
- chemistry
- offshore structures
- mining
- telecommunications
- road engineering
- public buildings
- workshops and storage halls

Products include:

- processing plant constructions with equipment
- silos
- cranes
- support construction of processing lines and pipelines offshore
- structures
- pallets
- containers
- racks



STEEL STRUCTURES – REALIZATIONS

KOZIENICE POWER PLANT



STEEL STRUCTURES – REALIZATIONS

OPOLE POWER PLANT



STEEL STRUCTURES – REALIZATIONS

POWER PLANTS



**Coal Power Plant
Westfalen, Germany
7 793 tons of steel**



**Coal Power Plant
Ledvice, Czech Republik
17 270 tons of steel**



**Power Plant
Ferrybridge
6 500 tons of steel**



**Petrochemistry
Abu Dhabi, UAE
450 tons of steel**



**Power Plant
Turów
7 000 tons of steel**

STEEL STRUCTURES –REALIZATIONS

PUBLIC USE FACILITIES



Steel structure cupola over traffic circle in Katowice Poland (240 tons of steel)



Steel facade at Children's Hospital of Philadelphia, USA (500 tons of steel)



**Trade Fair Centre, Exhibition Hall
Kielce, Poland
(930 tons of steel)**

STEEL STRUCTURES – REALIZATIONS OFFSHORE



**Transformer platform
for the Wind Power
Plant, Denmark**



**Pipe bridge, Ormen Lange project,
Norwegian Sea**

**Components of steel
structures for wind
turbines (steel nacelle)**



STEEL STRUCTURES – REALIZATIONS IN RAILWAY INDUSTRY



FREIGHTER TYPE SWITCHER

STEEL STRUCTURES – REALIZATIONS

SILOS, HEATERS, PALLETS



Heaters, 205 tons



Steel pallets for gas cylinders



Container



Silos, 17 tons

STEEL STRUCTURES – REALIZATIONS

NON - TYPICAL OBJECTS



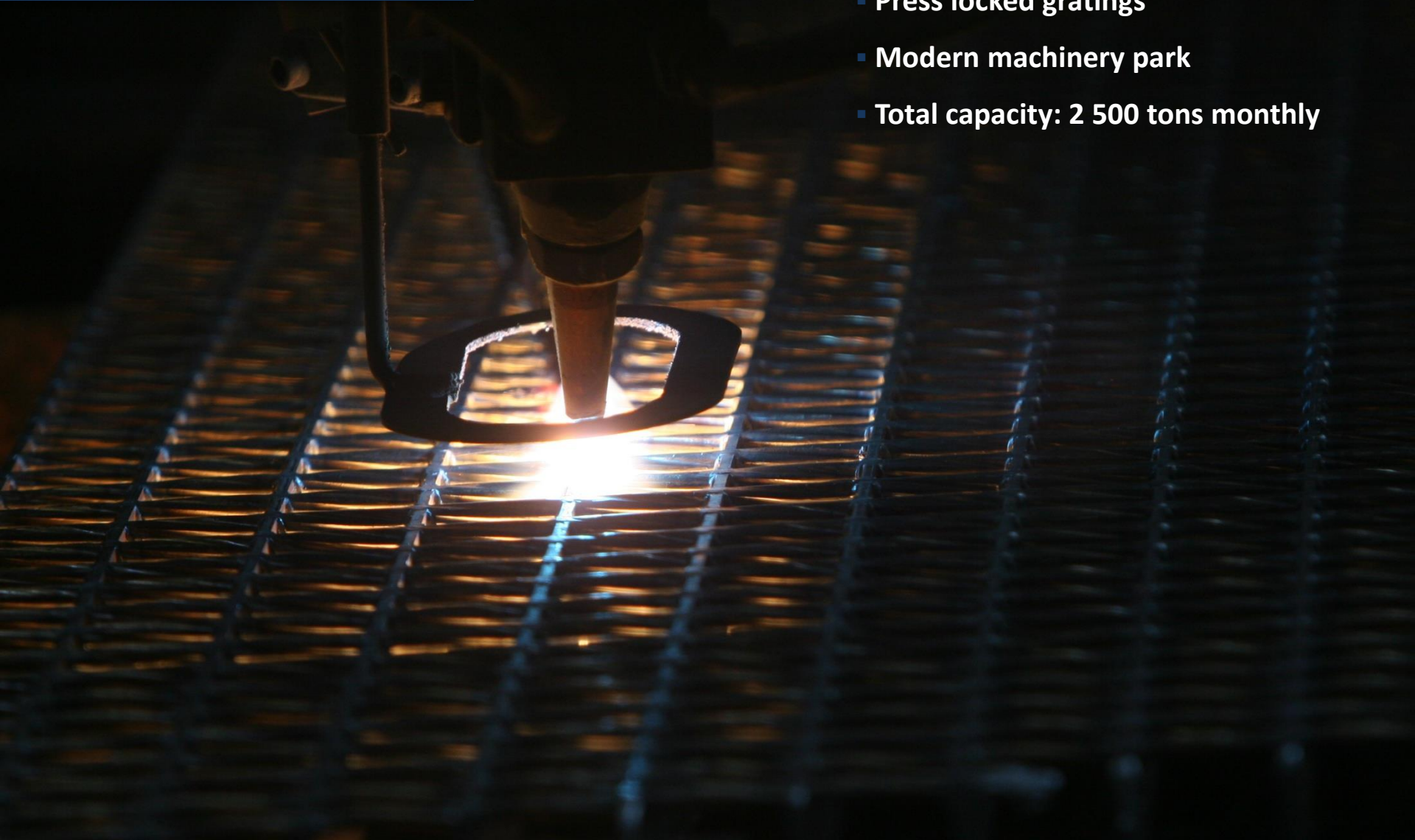
Steel structure cupola over traffic circle in Katowice Polan 240 tons of steel



Strasburg Railway Station facade structure 400 tons of steel

WORKSHOP IN SIEDLCE

- Welded gratings
- Press locked gratings
- Modern machinery park
- Total capacity: 2 500 tons monthly

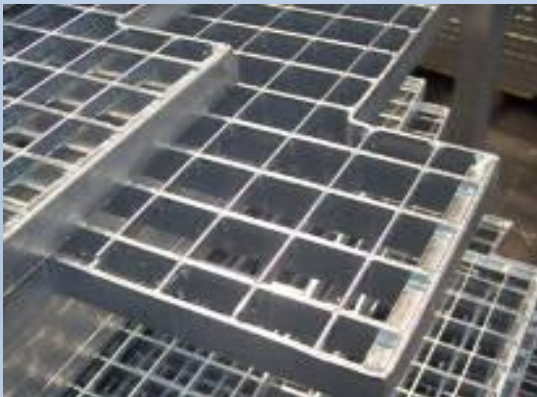


FABRICATION CAPABILITIES OF GRATINGS PRODUCTION

Mostostal Siedlce ensures comprehensive engineering support during the manufacturing process, delivery and assembly of platform gratings.

Gratings have plenty of possible applications. The most popular ones include:

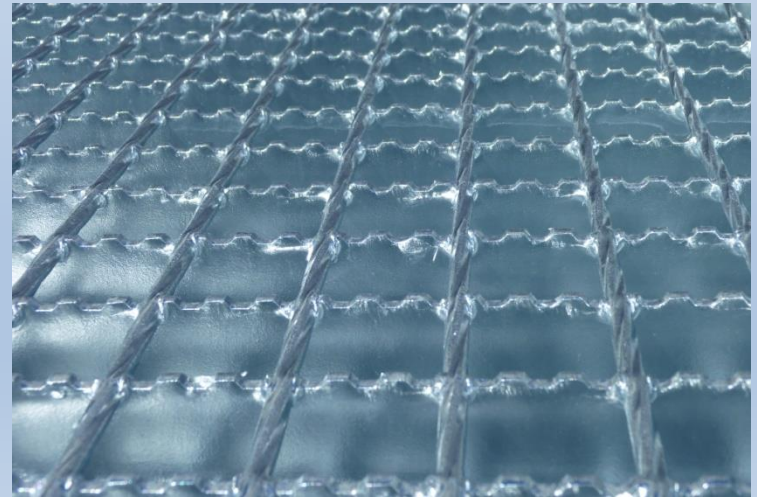
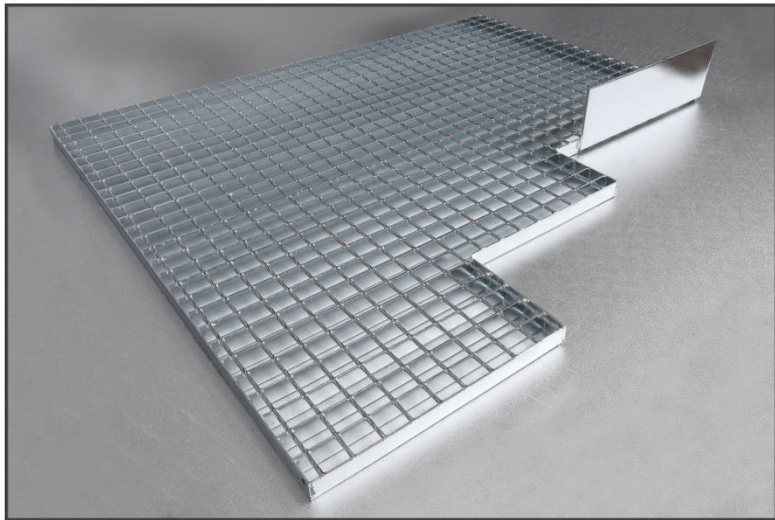
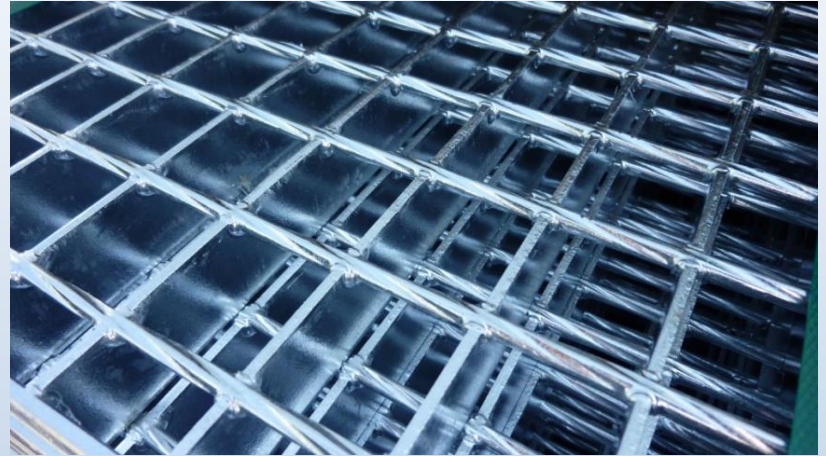
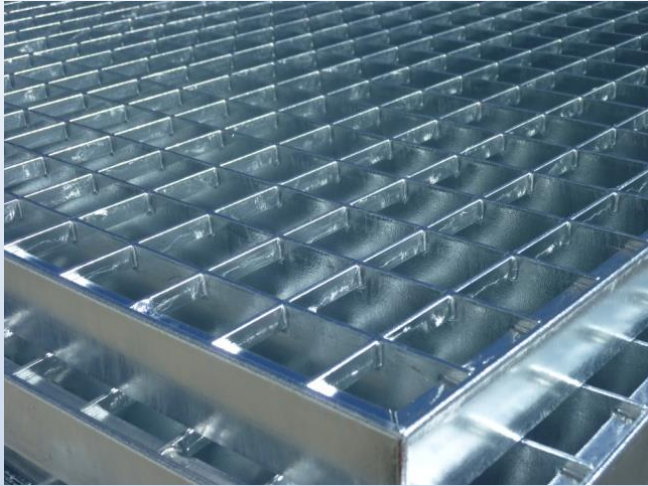
- platforms in production plant
- gantry platforms
- pipelines
- container routes
- pavements and pedestrians precinct



PLATFORMS AND SPIRAL STAIRCASES



PLATFORM GRATINGS



WORKSHOP IN SIEDLCE

- Hot dip galvanizing
- Duplex system
- Hydrodynamic painting
- Zinc metal spraying
- Total capacity: 7 000 tons of galvanized steel per month



FABRICATION CAPABILITIES

Mostostal Siedlce specializes in the application of anti-corrosion protection on steel constructions by hot-dip galvanizing.

Three technological lines for hot-dip galvanizing equipped with baths. Max. dimensions of components for galvanizing (length x width x depth):

- 12 500 x 1 700 x 2 900 mm
- 8 500 x 1 500 x 2 900 mm
- 6 500 x 1 700 x 2 900 mm



HOT DIP GALVANIZING



PAINTING



Mostostal Siedlce operates in accordance with the Integrated Management System based on:

- PN EN ISO 9001 Quality management system
- PN EN ISO 14001 Environmental management system
- PN N 18001, OHSAS 18001 Occupational Health and Safety management system
- PN EN 1090-1 Requirements for conformity assessment for structural components
- PN EN ISO 3834-2 Quality requirements for fusion welding of metallic materials -- Part 2: Comprehensive quality requirements
- PN EN 15085-2 Welding of railway vehicles and components
- CWB Certification of Companies for Fusion Welding of Steel (CSA Standard W47.1)

Mostostal Siedlce also puts a big focus on Health, Safety and Environment. Our HSE policy makes it mandatory for everyone who works for the company to adhere strictly to HSE performance standards.

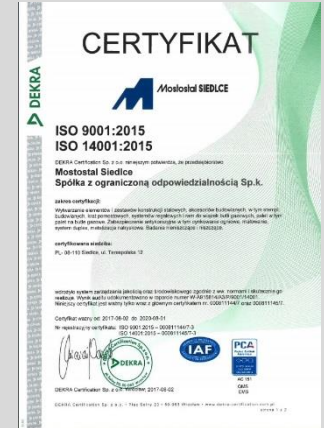


HSE

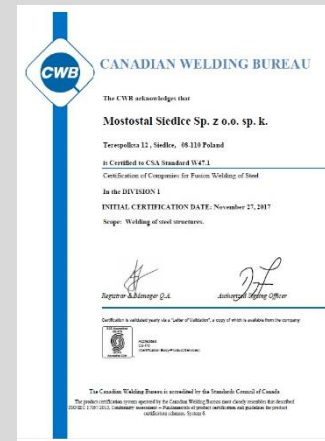
Certificates



OHSAS 18001



**PN-EN ISO 9001 ,
PN-EN ISO 14001**



**Certification of
Companies for Fusion
Welding of Steel**



EN 15085-2

CONTACT



Mostostal Siedlce

Spółka z ograniczoną odpowiedzialnością Sp. k
PL 08-110 Siedlce

ul. Terespolska 12

tel.: +(48) 25 643 95 47

fax: +(48) 25 643 96 57

e-mail: konstrukcje@polimex.pl

www.mostostal.siedlce.pl

Steel Structures Production Plant in Rudnik

37-420 Rudnik

ul. Stalowa 5

tel. +(48) 15 876 10 58

tel. +(48) 15 876 10 43

e-mail: rudnik@polimex.pl

Sales Departments

Steel Structures Sales Department

Mr. Paweł Laprus - Head of Sales Department

E-mail: pawel.laprus@polimex.pl

Gratings Sales Department

Mr. Paweł Jasiński - Head of Sales Department

E-mail: pawel.jasinski@polimex.pl

Corrosion Protection Sales Department

Mrs. Magda Kołak - Head of Sales Department

E-mail: magda.kolak@polimex.pl