



Mostostal SIEDLCE SA





TABLE OF CONTENTS

Group **p. 04**

Organisational structure **p. 05**

Offer **p. 07**

Offer - steel structures **p. 09**

Offer - platform gratings **p. 11**

Corrosion protection of steel products **p. 13**

Technology applied **p. 14**

Machinery park **p. 15**

Logistical services for projects **p. 17**

References **p. 18**

GROUP

Polimex-Mostostal Group is one of the largest Polish companies in engineering and construction industry, strategically important for the Polish economy and the national energy security. The Group executes projects as a General Contractor, in co-operation with reliable partners.

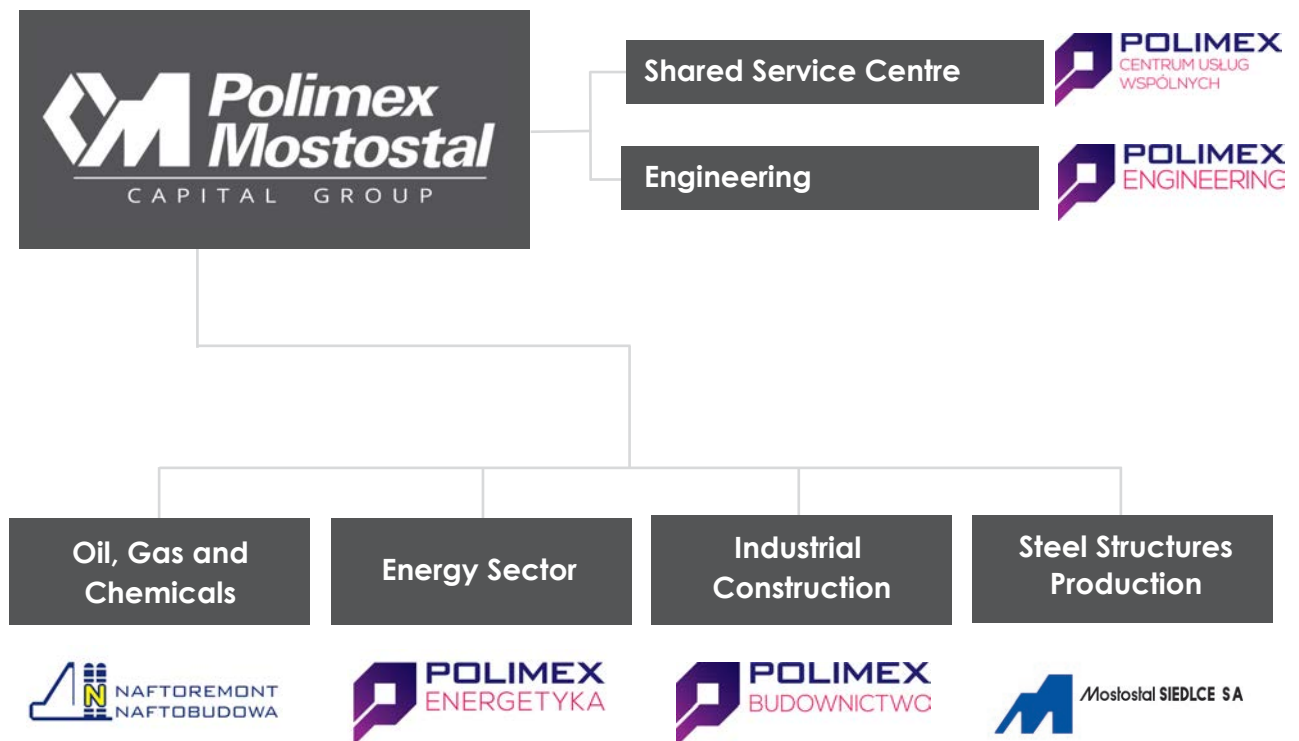
Besides, Polimex-Mostostal specializes in manufacturing of steel structures and platform gratings as well as in anticorrosion protection, including hot dip galvanizing.

The Polimex-Mostostal Group renders services within scope of general construction; construction of industrial facilities; delivery of processing lines; machines, equipment and spare parts as well as servicing for the following areas:

- oil, gas and chemicals
- energy sector
- industrial construction



ORGANISATIONAL STRUCTURE





OFFER

Mostostal Siedlce is one of the biggest manufacturer of steel products in Europe. The Company has a manufacturing floor area of 345 779 m² with following production capacities:

- Steel structures – 2500 tons/month
- Platform gratings – 2500 tons/month
- Anticorrosion protection services – 8000 tons/month

Mostostal Siedlce manufactures steel products on the basis of the customer's technical documentation and documentation developed by its own design engineers. The documentation is developed in compliance with the PN, DIN, EN, EUROCODES and GOST standards and is available in Polish, Russian, German and English.

The Company uses specialized designing and manufacturing software: Robot, Staad-Pro, Microstation – Structural, Rm-win, ABC Płyta, MathCad, Tekla, Bocad, RCad and AutoCAD.

The maximum overall dimensions of non-divisible components we can produce are: L = 30 m, B = 6.3 m, H = 4.2 m, and weight of 64 tons. The maximum dimensions of constructions assembled indoors as test assemblies are: L = 80 m, B = 25 m and H = 7 m (limited by the size of the processing bay).

The execution conforms to the following standards: EN 1090, NS 3464, BSK 99, PN-B 06200, DIN 18800-7, DIN 15018, DS 804, DIN 19704 and AWS D1.1.



OFFER STEEL STRUCTURES

MOSTOSTAL SIEDLCE MANUFACTURES STEEL CONSTRUCTIONS FOR THE FOLLOWING INDUSTRIES:

- power engineering, metallurgy
- petrochemistry and chemistry
- flue gas treatment and incineration plants
- mining
- telecommunications
- road engineering (bridges, footbridges, viaducts, sound screens, roadside barriers)
- automotive industry (car showrooms, car parks)
- public buildings (shopping malls, supermarkets, sports facilities, viewing towers)
- workshops and storage halls

PRODUCTS INCLUDE:

- processing plant constructions with equipment: ducts, smoke stacks, bag filters, electrostatic precipitators, heat exchangers, ventilator housings, conveyor housings
- siloses, hoppers, tanks
- lifting constructions: cranes (including harbour cranes)
- racks & shelving systems
- support construction of processing lines and pipelines
- offshore structures
- pallets, containers, racks



OFFER

PLATFORM GRATINGS

Mostostal Siedlce is known and highly valued in Poland and Europe for the production of welded and pressed platform gratings in compliance with DIN, PN, EN, BS, and ASTM standards.

MOSTOSTAL SIEDLCE MANUFACTURES THE FOLLOWING KINDS OF GRATINGS:

- SERRATED gratings (increased anti-slip feature)
- full pressed gratings
- louvered gratings
- heavy duty gratings
- gratings with extra infill of perforated strips/safety mesh
- gratings with extra infill of steel wire/offshore gratings
- high frame gratings
- stainless and acid-resistant steel gratings
- hot dip galvanized gratings and painted according to RAL
- gratings according to individual customers projects

GRATING-BASED PRODUCTS:

- stair steps
- straight and spiral stairs
- fencing systems
- sitting benches

MOREOVER, MOSTOSTAL SIEDLCE OFFERS:

- gratings fixings, fasteners
- comprehensive service for design and process technology (gratings layout plans and technical projects of straight and spiral stairs and platforms)
- technical consulting: selection of best gratings type in terms of application and costs

Grating platforms are made of attested materials delivered by established companies of the steel sector.



CORROSION PROTECTION OF STEEL PRODUCTS

Mostostal Siedlce specializes in applying anticorrosion protective coating on steel structures and different steel products by hot dip galvanizing process.

THE COMPANY OFFERS:

- hot galvanizing (dip galvanizing) to PN-EN ISO 1461
- hydrodynamic painting to PN-EN ISO 12944
- duplex system (zinc coating + painting)
- zinc spray coating to PN-EN ISO 2063
- mechanical cleaning (shot blasting) to PN-EN ISO 8501-1, surface preparation – Sa 2½

Corrosion Protection Department in Siedlce is equipped with two hot dip galvanizing lines, a modern paint plant and zinc spraying equipment.

Kettle 1: 13 m lenght, 1,8 m width, 3,3 m hight, 4 t max. weight of steel product

Kettle 3: 7 m lenght, 1,8 m width, 3,3 m hight, 4 t max. weight of steel product

Zinc spraying and hydrodynamic painting can be applied on elements up to 30 meters and weight of mex. 64 tons.

TECHNOLOGY APPLIED

Mostostal Siedlce applies the following technologies in manufacturing of steel structures:

- blast cleaning of materials and products in chamber and continuous shot-blasting machines
- thermal cutting of steel sheets by laser, oxygen and plasma
- thermal cutting of shapes in metallurgical profiles using industrial robots
- mechanical cutting of profiles with band and circular saws
- mechanical cutting of steel sheets and profiles with guillotines
- hole drilling in profiles and steel sheets
- hole cutting in profiles, sheets and bands
- bending and straightening at hydraulic vertical bending brakes and horizontal presses
- steel sheet straightening (up to 32 mm thick)
- processing at mechanical presses
- steel sheet and profile edge machining with abrasive belts which allows to prepare edges for welds very precisely
- machining of work-pieces on a large, modern, horizontal milling centre – table travel: X-13000, Y-4000, Z-1700, load on table up to 20 tons
- manufacture of welded platform gratings at automatic production lines (EVG I – approximately 1000 tons/month, EVG II – c 1300 ton/month, EVG III – c 1300 tons/month) and pressed platforms – customized orders
- hand welding, mechanised welding, semiautomatic and automatic welding by MAG (135), MAG (136), SAW (121), ASW (783), E (111) methods, including welding of plate girders by 121 and 135 (136) methods at highly automated production lines; welded materials: steel from S235 to S690, processing types: +AR, +N, +M, N, NL, M, ML, Q, QL acc. to EN 10025.

MACHINERY PARK

During realisation of all Mostostal Siedlce projects, we use a modern machinery park and equipments such as: UNION, FICEP, DEUMA, CULMAYER, ESAB – all of them meeting highest market requirements.

The majority of machines is equipped with a CNC steaming system linked through technological office to a computer network forming CAD/CAM. A part of the machines form CAD/CAM flexible production line for a complete machining of steel works products.



CAM data obtained from own systems or from customers is commonly used in controlling CNC machines and lines. Possible corrections and optimisation might be introduced and sent via computer network for processing by machine or CNC line. Production process office is equipped with computer stations for automatic design of the gratings layout.



LOGISTICAL SERVICES OF PROJECTS

Mostostal Siedlce production plants are supported by their own Logistics Department to ensure a proper logistic as well as storage and transport organisation. All production steel is delivered by qualified suppliers, in full compliance with the certified ISO-9001 quality system. Depending on the project we outsource steel from leading Polish and European steelworks, as well as biggest steel distributors in Poland, Germany, Austria and France.

Mostostal Siedlce delivers manufactured constructions and products directly to the assembly site or to any location specified by the customer. The Company ships by road, rail or sea, as well as by combined shipping. Mostostal Siedlce delivers its products on tilting cars or in shipping containers, depending on the customer's requirements.

The Purchasing Department continuously analyses current situation on the global steel market, with special consideration for Poland and Europe.

LOGISTICS DEPARTMENT, WHICH IS BASED IN SIEDLCE, SUPPORTS THE PRODUCTION IN FOLLOWING AREA:

- prepares transport offers for large-scale projects in terms of availability, time of delivery and pricing
- supplies steel and all production materials required for projects and processing
- supplies all relevant conformity and material certificates

REFERENCES

Mostostal Siedlce is a reliable, trustworthy partner with great experience in the design, manufacture and delivery of steel products for domestic and foreign markets.

APART FROM COMPETITIVE PRICING, CUSTOMERS OF MOSTOSTAL SIEDLCE BENEFIT FROM:

- the highest quality of manufacturing
- professional technical support
- reliable custom delivery times
- high production capacity of 5 500 tons monthly.



AZERBAIJAN

Baku – steel structures for a power plant, 1200 tons; Sangachal – steel structures for construction industry, 1050 tons.

BELGIUM

Amel – steel structures for a power plant, 260 tons; Langerbrugge – steel structures for a waste gas cleaning plant, 1700 tons.

BULGARIA

Burgas – delivery of steel structures, 150 tons; Galabowo, Stara Zagora – a structure of a boiler building for Maritza Power Plant, 1720 tons.

CZECH REPUBLIC

Bilina – delivery of gratings and structures for Ledvice Power Plant, 17600 tons.

DENMARK

Asnaes – steel structures of an absorber for Asnaes Power Plant, 680 tons; Hvidovre – roof structure for Avedore Power Plant, 230 tons; Odense – shipyard hall roof Lindo, 1750 ton.

FRANCE

Cordemais – delivery and assembly of steel structures for a waste gas cleaning plant, 4000 tons; Saint-Gaudens – delivery and assembly of steel structures of a boiler and filters, 370 tons.

GERMANY

Boxberg – waste gas ducts, 370 tons; Bönen – steel structure for a store, 1050 tons; Bremerhaven – steel structures for a transformer station platform, 209 tons; Grevenbroich – construction of channels for Neurath Power Plant, 1244 tons; Hamm – construction for Westfalen Power Plant, 7600 tons; Hannover – Airbus A380 air shed

REFERENCES

Schwed – hall steel structure, 197 tons.

NORWAY

Mongstad – Statoil trestle bridges, 900 ton; delivery of steel structures, 220 tons; Mosjoen – delivery and assembly of steel structures and boltings for a colliery, 620 tons.

PAKISTAN

Lahore – steel structures for a power plant, 1050 tons.

POLAND

Kozienice – structures and gratings for Kozienice Power Plant, 16000 tons; Opole – structures and gratings for Opole Power Plant, 6000 tons; Bełchatów – structures and gratings for Bełchatów Power Plant, 7200 tons; Bogdanka – delivery of structures and gratings for brown coal mine, 3030 tons; Dąbrowa Górnicza – delivery of gratings for Przyjaźń Coking Plant, 250 tons; Gdańsk – delivery of gratings for the construction of Gdańsk Refinery, 300 tons; delivery of stainless steel gratings for the construction of a water treatment plant, 5 tons; Gdańsk Lotos – trestle bridge, steel support structure, 2000 tons; platform gratings, 90 tons; Gdynia – roof over sports and event stadium, 505 tons; Grajewo – steel structure for a woodbased panel production facility, 1000 tons; Katowice – dome steel structure above the J. Ziętek Roundabout, 260 tons; Kielce – steel structures for the exhibition hall, 930 tons; Kraków – Wisła Football Stadium, 840 tons; Połaniec – channels, supports and gratings for the Połaniec Power Plant, 2000 tons; Skoczów – bridge structure, 230 tons; Tczew – delivery of gratings for a bridge, 200 tons; Warsaw – Legia Football Stadium, 2635 tons; Włocławek – steel structures for chemical industry, 2000 tons of structures; delivery of gratings for a teraphthalatic acid production plant, 250 tons; Wrocław – steel structure of the Galeria Legnicka, 3000 tons.



Kozenice Power Plant



Opole Power Plant

REFERENCES

RUSSIA

Kozuchovo and Tereshkovo – support structure of a boiler, channels, enclosures, 730 tons; Krasnojarski Kraj – delivery of gratings for service platforms; Vankorskoye – gas and oil deposit, 600 tons; Nizhekamsk, Tatarstan – gratings for service platforms, Petroleum Processing Plant, 900 tons; Norylsk – Nickel Processing Plant, 200 tons; Novochoerkasskaya – structures for air heaters, 300 tons; Ryazan – glassworks steel structure, 585 tons; structures for a cement mill building, 3400 tons; Tobolsk – delivery of gratings for service platforms, Polypropylene Production Facility, 600 tons.

SWEDEN

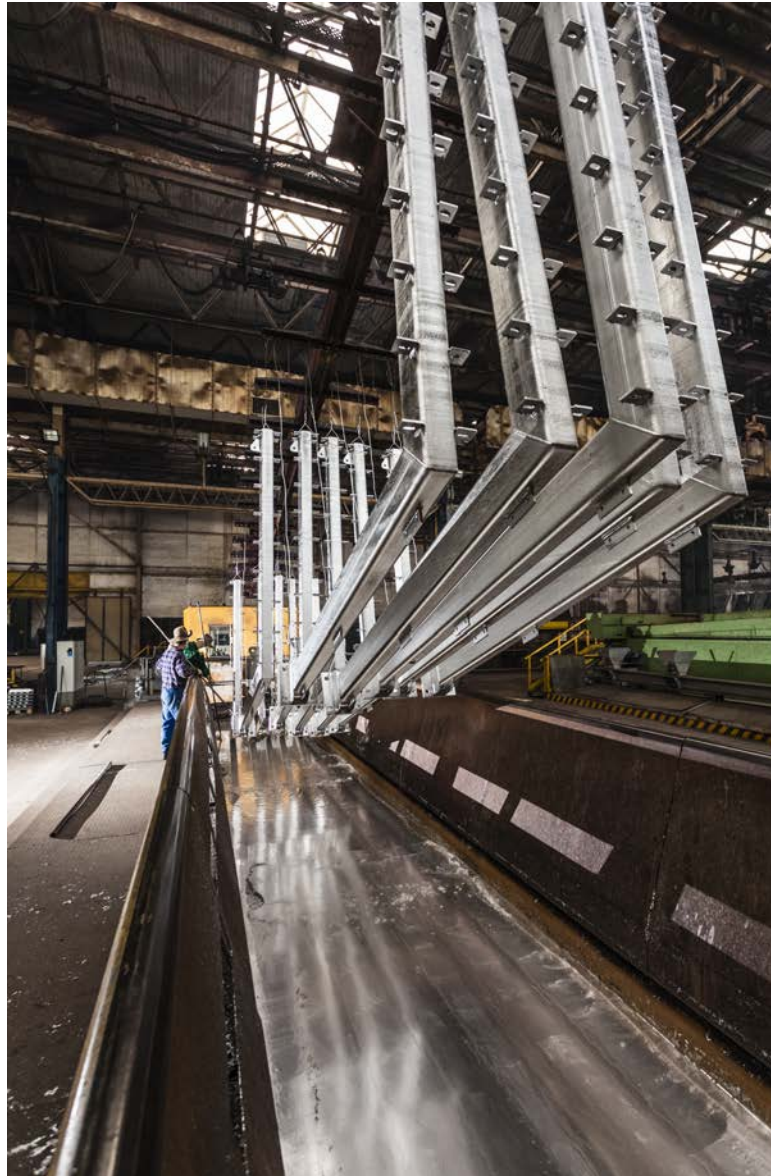
Anns – delivery of steel structures for Absolut Spirits, 273 tons; Göteborg – delivery and assembly of steel structures for the incineration plant, 400 tons; Iggesund – delivery of gratings for the construction of a waste incineration plant, 250 tons; Kalmar – delivery and assembly of steel structures for Kalmar Power Plant, 700 tons; Kiruna – delivery and assembly of steel structures, 2700 tons.

GREAT BRITAIN

Irvine – delivery and assembly of steel structures for paper works, 1000 tons; Lockerbie – delivery and assembly of steel structures and an enclosure for a power plant, 1300 tons; London – delivery and assembly of steel structures at Riverside Incineration Plant, 3000 tons; Shotton – delivery and assembly of steel structures and their enclosure for a power plant structure, 900 tons.

ITALY

Fossalta – delivery and assembly of steel structures for the incineration plant, 470 tons; Rome – delivery of gratings for a fast railway station, 100 tons; Sannazzaro – delivery of gratings for the construction of a refinery, 200 tons; Turin – supply of a supporting structure and gratings to a waste incineration plant, 1635 tons.



Steel Structures Production Department in Siedlce

12 Terespolska Street

08-110 Siedlce

tel. (+48) 25 643 94 57

fax (+48) 25 643 96 57

e-mail: konstrukcje@polimex.pl

Gratings Production Department

12 Terespolska Street

08-110 Siedlce

tel. (+48) 25 643 95 07, (+48) 25 643 94 57

fax (+48) 25 643 96 57

e-mail: kraty-handel@polimex.pl

Anticorrosive Protection Department Siedlce Galvanizing and Paint Plant

12 Terespolska Street

08-110 Siedlce

tel. (+48) 25 643 95 07, (+48) 25 643 92 70

fax (+48) 25 643 96 57

e-mail: cynkowanie@polimex.pl

Steel Structures Production Plant in Rudnik

5 Stalowa Street

37-420 Rudnik

tel. (+48) 15 876 10 58

fax (+48) 15 876 10 43

e-mail: rudnik@polimex.pl



Mostostal SIEDLCE SA

www.mostostal.com

